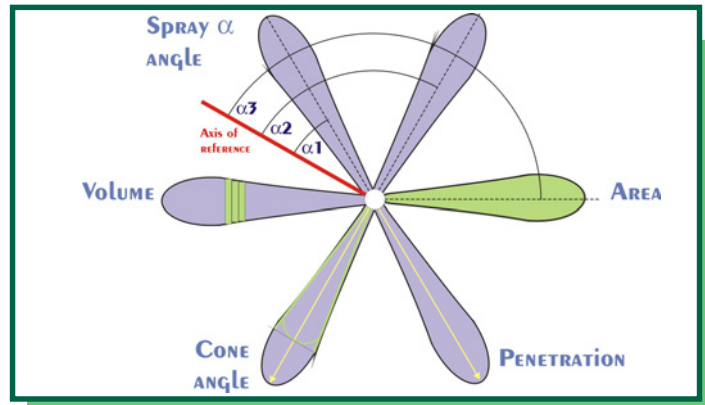


## PRESENTATION

The **SprayAnalyzer** software enables all the analysis steps of jets coming from **gasoline or diesel injectors** to be performed automatically.

The image processing is completely controlled from the image acquisition and processing to the presentation of the results.

## EFS 1765



## USE

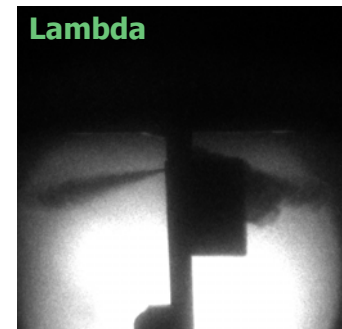
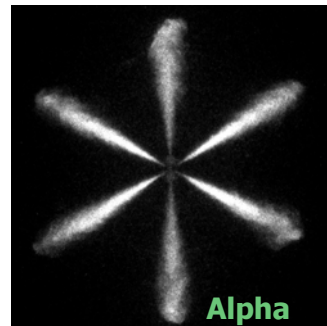
When used with the InjetVision system, the **SprayAnalyzer** guarantees full control of the application:

- bench control
- fault and error management
- image acquisition and processing

When used with a different visualization system, the **SprayAnalyzer** only performs image acquisition and processing, or simply image processing.

The **SprayAnalyzer** software allows the following jet parameters to be measured:

- spray tip penetration
- spray cone angle
- spray area
- spray volume
- Alpha spray ( $\alpha$ ) angles with localization (for HP diesel injectors)
- Lambda spray ( $\lambda$ ) angles with localization

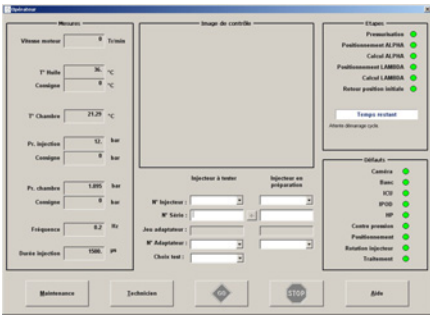


## CONFIGURATION

- Pentium ® 4. 2GHz
- CD-ROM drive
- Hard disk 20Gb
- 1024Mb RAM
- Windows XP/2K

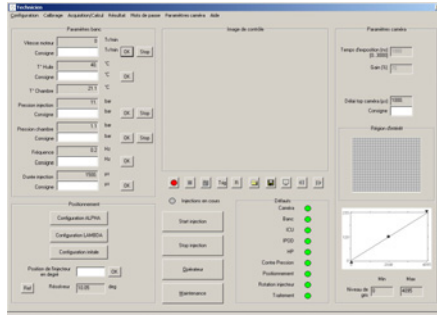
# INTERFACE

The **SprayAnalyzer** features an intuitive IHM, made of 3 separate interfaces, providing both ease of use (operating interface) and a wide range of configuration parameters (technical interface).



## OPERATING interface

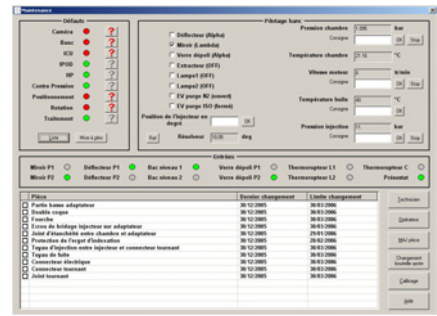
The use of this interface is completely automatic and allows a pre-configured cycle to be launched through the Technician Interface.



## TECHNICIAN interface

This interface allows the input of operational parameters for optimal system use.

- injector configuration
- cycle configuration
- jet acquisition and parameter calculation in Alpha and Lambda modes.



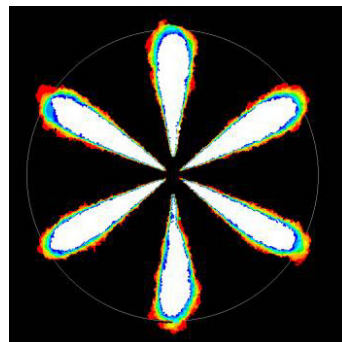
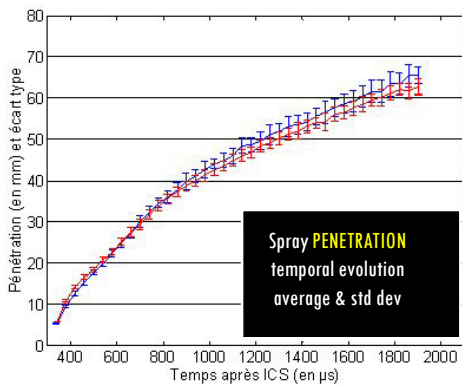
## MAINTENANCE interface

This interface allows surveillance of bench operations, via the following functions:

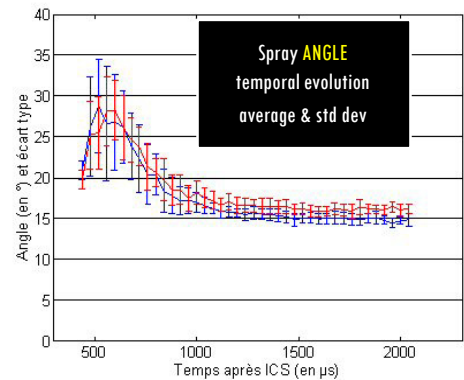
- automated management of:
- worn-out parts
- nitrogen cylinder change
- faults and errors
- bench control
- sensor calibration.

# RESULTS

The results are provided in the form of pictures, charts or tables (mean value, standard deviation, min-max). All the instantaneous values can be accessed in a specific file.



Injection located area at a fixed delay



YOUR PARTNER IN ELECTRONICS

BP 34 F - 69390 Millery  
 Tel. : +33 (0)4 72 49 27 72  
 Fax : +33 (0)4 72 49 27 77  
 E-mail : efs@efs.fr  
 Site : www.efs.fr

Order reference  
**EFS 1765**